

Original Research Paper

Characterization and evaluation of mountain sweet thorn (*Flacourtia montana* J. Grah) collections

Tripathi P.C.*, Ganeshan S., Radhika V. and Shetti D.L.

ICAR- Indian Institute of Horticultural Research
Hessaraghatta lake Post, Bangalore, Karnataka

*Corresponding author e-mail : prakaashtripathii2000@yahoo.co.in

ABSTRACT

Mountain sweet thorn (*Flacourtia montana* J. Grah) is an indigenous underutilized fruit of Western Ghats and other regions of peninsular India. It is a close relative of Governor's plum. It is bushy shrub or small tree with spiny trunks and branches which may grow up to 2.5 m height. The fruits are bright dark red 1-2 cm in diameter, sweet edible and have potential for processing into jams and jellies. The presence of thorn is one of the major hurdles for commercialization of this crop. Thus, seeds of the thorny plants of the Mountain sweet thorn were collected from different locations and seedlings were planted to identify suitable line. The plant height ranged from 425 cm (accession 0208) to 710 cm (accession 0202). The plant girth ranged from 34.5 cm to 82 cm. The growth data revealed that all the accessions are vigorous, fast growing and various levels of thorniness. All the accessions were found to be spreading type. Significant variability was recorded for leaf characteristics among the accessions studied. Three major clusters were observed in cluster analysis for morphological and fruiting characters consisting of 1, 8 and 9 accessions, respectively. The number of fruits ranged from 0 to 4008. Highest yield (9.46 kg/plant) was obtained in accession - 0106 followed by accession- 0201 (7.83 kg). The average fruit weight ranged from 1.51 g to 3.94 g. Highest fruit weight (3.94g) was also recorded in 0106 followed by 2.84 (0102). The total soluble solids ranged from 10⁰ Brix to 15.1⁰ Brix. Over all, accession 0201 was found better than others with respect to yield, regular bearing and less thorniness.

Key Words: Mountain sweet thorn, segregation, thornless and yield

INTRODUCTION

There are several underutilized and wild fruits are native to Western Ghats of India (Arora, 1998; Tripathi *et al.*, 2015) of which mountain sweet thorn (*Flacourtia montana* J. Grah) one of the important indigenous underutilized fruits of tropical region. It belongs to the family flacourtiaceae. It is a close relative of governor's plum. The plants of several species of *Flacourtia* genus are found growing in wild in Western Ghats and other regions of peninsular India (Barwick, 2004). It is bushy shrub or small tree with spiny trunks and branches which may grow up to 2.5 meter height. Fruiting begins in the month of January to March. It bears dark red coloured fruits which are pleasantly acid, eaten raw and used also for jelly preparation. The fruits have high potential for processing into jam, jelly, wine, *etc.* (Mundaragi *et al.*, 2019). Ripe fruits are often dried and stored. Ripe

fruits are delicious to taste and rich in sugars, calcium, magnesium, potassium, sodium, phenolics, flavonoids and ascorbic acid (Mundaragi and Thangadurai, 2015). It has also been reported that the fruits leaves and bark of this species have various pharmacological activities like antibacterial, antidiabetic, anti-inflammatory and hepatoprotective *etc.* (Joshy *et al.*, 2016). The presence of thorn is one of the major hurdles in commercialization of this crop. Thus, some accessions of Mountain sweet thorn which are less thorn were selected and evaluated for various characteristics during 2016-19.

MATERIAL AND METHODS

The *Flacourtia montana* J. Grah accessions were collected from Kerala during 2008-09 through extensive surveys from Palode. The seedlings



were directly planted in the field at a distance of 5x5m at ICAR-IIHR, Bangalore which is located at 13.133999 ° N latitude and 77.47880 ° E at 855m above sea level. It has sub humid tropical climate with annual rainfall of 86cm. The soil is red. The plants started fruiting in third year and yield got stabilized after five harvesting seasons. Eighteen accessions were evaluated for two years for vegetative growth, flowering, fruiting and fruit characteristics. Twenty-five mature fruits were harvested randomly from each accession to record the physico-chemical parameters. The fruits were washed with distilled water and the surface water was removed using blotting paper. The cleaned air-dried samples were used. The fruit weight, fruit length, fruit diameter was recorded using electric balance and digital vernier caliper. The fruit shape and fruit colours were recorded as per the standard fruit shape (Gupta, 1972 and Berg, 2007) and colour charts (RHS colour chart, 1966). The fruits were cut and pulp colour was recorded. The total soluble solids (TSS) were determined with Erma hand refractometer (0-32°Brix) and titratable acidity (%) was estimated using procedures described by Ranganna (1986).

Data analysis

The data was analysed using R software (R-4.0.3). The distance matrix required for hierarchical clustering was computed using the 'dist' function which is based on Euclidean distances between the accessions. The hierarchical clustering of the accessions was done using 'hclust' function based on complete linkage method. Principal Component Analysis (PCA) was done using the 'pca' function. (Team, 2019).

RESULTS AND DISCUSSION

Morphological characterization

Growth characteristics

Morphological characterization of 18 accessions of mountain sweet thorn was done as per the standard descriptors. The plant height ranged from 425 cm to 710 cm with highest in accession 0202. The plant girth ranged from 34.5 cm to 82 cm. The plant spread (E-W) ranged from 315 cm to 625 cm where as N-S ranged from 315 cm to 625 cm. The growth data revealed that all the accessions were vigorous, fast growing and spreading type. The foliage was dense

and leaves were dark green. The new leaf colour was coppery red in all accessions (Table 1). Leaf length ranged from 8.53 cm to 15.9 cm. The leaf width ranged from 4.23 cm to 6.89 cm. The petiole length ranged from 0.33 to 0.59 cm in different accessions. The leaf blade was pinned and all the accessions have petiolate leaves. The leaf margin was serrated while leaf apex was acute or acuminate type. The leaf base was elliptical in most of the collections but it was ovate in accessions- 0103, 0106, 0202, 0306. The leaf base was acuminate or rounded (Table 2). These all accessions are fast growing but different levels of thorniness. Some collections were highly thorny while some have moderate thorny. The number of thorns per 1m stem trunk were highest (63) in accession-0105 followed by 47 thorns in accessions-207 and 0208. The accessions-0103, 0104, 0201 were found thornless. All the accessions started flowering in December and continued for almost one month. There was only 1-2 weeks difference in the flowering period of different accessions. The flowering time varied in both years which may be due to weather conditions (Table 3).

Cluster analysis

Clustering of the 18 accessions was done based on the morphological data. As the dataset consisted of mixed data types viz. numeric and attribute, the distance between the accessions was computed using Gower's distance measure. Hierarchical clustering of the accessions based on the complete agglomeration method was done for the above distance matrix and a dendrogram was generated (Fig 1). Three major clusters were observed consisting of 1, 8 and 9 accessions, respectively. The first cluster consisted of the one accession i.e. O102. Cluster 2 consisted of 7 female plants and one male plant (O206) while cluster 3 consisted of 6 male plants and two female plants. The minimum distance was found between the accessions O201 and O205 (cluster III) while the maximum distance was observed between O102 (cluster I) and O103 (cluster III) (Fig 1).

Principal Component Analysis

The principal component analysis was done based on the numeric characters of morphological and leaf data. 68.7% of the total variance was explained by the first two components (39% by 1st component and 29.7% by 2nd component) (Fig 2 & Table 4).

Table 1 : Morphological characterization of *Flacourtia montana* accessions

Accession No.	Plant height (cm)	Plant girth (cm)	Plant spread (E-W) cm	Plants spread (N-S) cm	Habit	Growth pattern	New Leaf colour	Foliage density	Leaf Colour
O102	705	82	577.5	487.5	Small Tree	Spreading	Coppery red	Dense	Light Green
O103	615	49.5	502.5	450	Small Tree	Spreading	Coppery red	Dense	Light Green
O104	655	53	490	492.5	Small Tree	Spreading	Coppery red	Dense	Light Green
O105	633.5	71.5	442.5	570	Small Tree	Spreading	Coppery red	Dense	Light Green
O106	660	59.5	625	602.5	Small Tree	Spreading	Coppery red	Dense	Light Green
O201	592.5	45	535	495	Small Tree	Spreading	Coppery red	Dense	Light Green
O202	710	53.5	447.5	471	Small Tree	Spreading	Coppery red	Dense	Light Green
O203	560	62	470	485	Small Tree	Spreading	Coppery red	Dense	Light Green
O204	585	53.5	510	560	Small Tree	Spreading	Coppery red	Dense	Light Green
O205	600	54	450	480	Small Tree	Spreading	Coppery red	Dense	Light Green
O206	580	77.5	497.5	492.5	Small Tree	Spreading	Coppery red	Dense	Light Green
O208	425	34.5	315	320	Small Tree	Spreading	Coppery red	Dense	Light Green
O302	595	42	550	535	Small Tree	Spreading	Coppery red	Dense	Light Green
O303	655	47	385	505	Small Tree	Spreading	Coppery red	Dense	Light Green
O304	655	53.5	432.5	500	Small Tree	Spreading	Coppery red	Dense	Light Green
O305	622.5	56	440	482.5	Small Tree	Spreading	Coppery red	Dense	Light Green
O306	590	40	387.5	525	Small Tree	Spreading	Coppery red	Dense	Light Green
O307	655	71.5	557.5	505	Small Tree	Spreading	Coppery red	Dense	Light Green
Average	616.31	55.86	478.61	497.69	-	-	-	-	-
Min	425	34.5	315	320	-	-	-	-	-
Max	710	82	625	602.5	-	-	-	-	-
SD	63.67	12.96	76.07	58.30	-	-	-	-	-

Table 2 : Leaf characteristics of *Flacourtia montana* accessions

Accession No.	Leaf length (cm)	Leaf width (cm)	Petiole length (cm)	Leave type	Leaf Blade	Venation	Leaf Margin	Leaf Apex	Leaf Shape	Leaf Base
O102	8.53	4.23	0.33	Petiolate	Pinned	Pinnate	Serrate	Acuminate	Elliptical	Acuminate
O103	14.8	5.43	0.38	Petiolate	Pinned	Arcuate	Serrate	Acute	Ovate	Rounded
O104	13.04	5.4	0.34	Petiolate	Pinned	Arcuate	Serrate	Acute	Elliptical	Acuminate
O105	14.8	5.27	0.33	Petiolate	Pinned	Arcuate	Serrate	Acuminate	Elliptical	Acuminate
O106	13.85	6.09	0.39	Petiolate	Pinned	Arcuate	Serrate	Acuminate	Ovate	Rounded
O201	11.98	5.57	0.33	Petiolate	Pinned	Arcuate	Serrate	Acuminate	Elliptical	Acuminate
O202	10.65	4.79	0.37	Petiolate	Pinned	Arcuate	Serrate	Acuminate	Ovate	Rounded
O203	13.5	6.12	0.44	Petiolate	Pinned	Pinnate	Serrate	Acute	Elliptical	Acuminate
O204	12.63	5.56	0.41	Petiolate	Pinned	Arcuate	Serrate	Acuminate	Elliptical	Acuminate
O205	12.17	5.46	0.33	Petiolate	Pinned	Arcuate	Serrate	Acuminate	Elliptical	Acuminate
O206	13.7	6.89	0.48	Petiolate	Pinned	Arcuate	Serrate	Acute	Elliptical	Rounded
O208	11.52	5.23	0.45	Petiolate	Pinned	Arcuate	Serrate	Acute	Elliptical	Rounded
O302	13.93	5.68	0.44	Petiolate	Pinned	Arcuate	Serrate	Acuminate	Elliptical	Acuminate
O303	14.6	6.18	0.55	Petiolate	Pinned	Pinnate	Serrate	Acute	Elliptical	Rounded
O304	12.24	6.23	0.53	Petiolate	Pinned	Arcuate	Serrate	Acute	Ovate	Acuminate
O305	12.09	5.20	0.59	Petiolate	Pinned	Arcuate	Serrate	Acute	Elliptical	Acuminate
O306	15.9	6.48	0.575	Petiolate	Pinned	Arcuate	Serrate	Acuminate	Elliptical	Acuminate
O307	13.58	5.76	0.475	Petiolate	Pinned	Arcuate	Serrate	Acute	Elliptical	Acuminate
Average	12.97	5.64	0.43	-	-	-	-	-	-	-
Min	8.53	4.23	0.33	-	-	-	-	-	-	-
Max	15.90	6.89	0.59	-	-	-	-	-	-	-
SD	1.73	0.63	0.09	-	-	-	-	-	-	-

Table 3: Flowering characteristics of *Flacourtia montana* accessions

Accession No.	Date of start of flowering		Date of end of flowering		Date of start of fruit maturity		Date of full fruit maturity	
	2017-18	2018-19	2017-18	2018-19	2017-18	2018-19	2017-18	2018-19
O102	Dec 21, 2017	Dec 14, 2018	Jan 20, 2018	Jan 21, 2019	Feb 14, 2018	Feb 14, 2019	March 26, 2018	March 26, 2019
O103	Dec 21, 2017	Dec 14, 2018	Jan 24, 2018	Jan 22, 2019	-	-	-	-
O104	Dec 18, 2017	Dec 10, 2018	Jan 24, 2018	Jan 21, 2019	Feb 14, 2018	Feb 14, 2019	March 26, 2018	March 26, 2019
O105	Dec 21, 2017	Dec 14, 2018	Jan 24, 2018	Jan 22, 2019	-	-	-	-
O106	Dec 15, 2017	Dec 15, 2018	Jan 18, 2018	Jan 21, 2019	Feb 14, 2018	Feb 14, 2019	March 26, 2018	March 26, 2019
O201	Dec 21, 2017	Dec 14, 2018	Jan 20, 2018	Jan 21, 2019	Feb 14, 2018	Feb 14, 2019	March 26, 2018	March 26, 2019
O202	Dec 21, 2017	Dec 14, 2018	Jan 24, 2018	Jan 22, 2019	-	-	-	-
O203	Dec 21, 2017	Dec 15, 2018	Jan 24, 2018	Jan 21, 2019	Feb 14, 2018	-	March 26, 2018	-
O204	Dec 18, 2017	Dec 14, 2018	Jan 20, 2018	Jan 21, 2019	Feb 14, 2018	-	March 26, 2018	-
O205	Dec 18, 2017	Dec 14, 2018	Jan 20, 2018	Jan 21, 2019	-	-	-	-
O206	Dec 18, 2017	Dec 14, 2018	Jan 20, 2018	Jan 21, 2019	-	-	-	-
O208	Dec 18, 2017	Dec 24, 2018	Jan 24, 2018	Jan 21, 2019	-	Feb 14, 2019	-	March 26, 2019
O302	Dec 18, 2017	Dec 14, 2018	Jan 24, 2018	Jan 22, 2019	-	-	-	-
O303	Dec 15, 2017	Dec 24, 2018	Jan 20, 2018	Jan 21, 2019	Feb 14, 2018	Feb 14, 2019	March 26, 2018	March 26, 2019
O304	Dec 21, 2017	Dec 24, 2018	Jan 20, 2018	Jan 22, 2019	Feb 14, 2018	-	March 26, 2018	-
O305	Dec 18, 2017	Dec 24, 2018	Jan 20, 2018	Jan 22, 2019	Feb 14, 2018	-	March 26, 2018	-
O306	Dec 18, 2017	Dec 24, 2018	Jan 20, 2018	Jan 22, 2019	-	-	-	-
O307	Dec 21, 2017	Dec 24, 2018	Jan 20, 2018	Jan 22, 2019	Feb 4, 2018	-	March 26, 2018	-

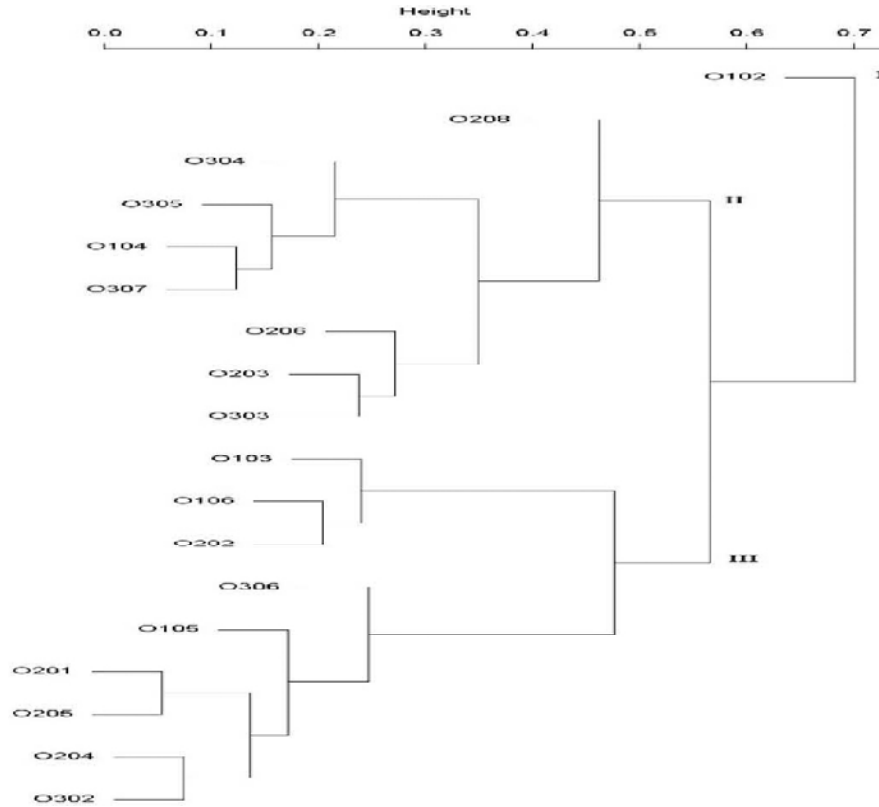


Fig. 1: Clustering of *Flacourtia* accessions Collections for morphological and leaf characters

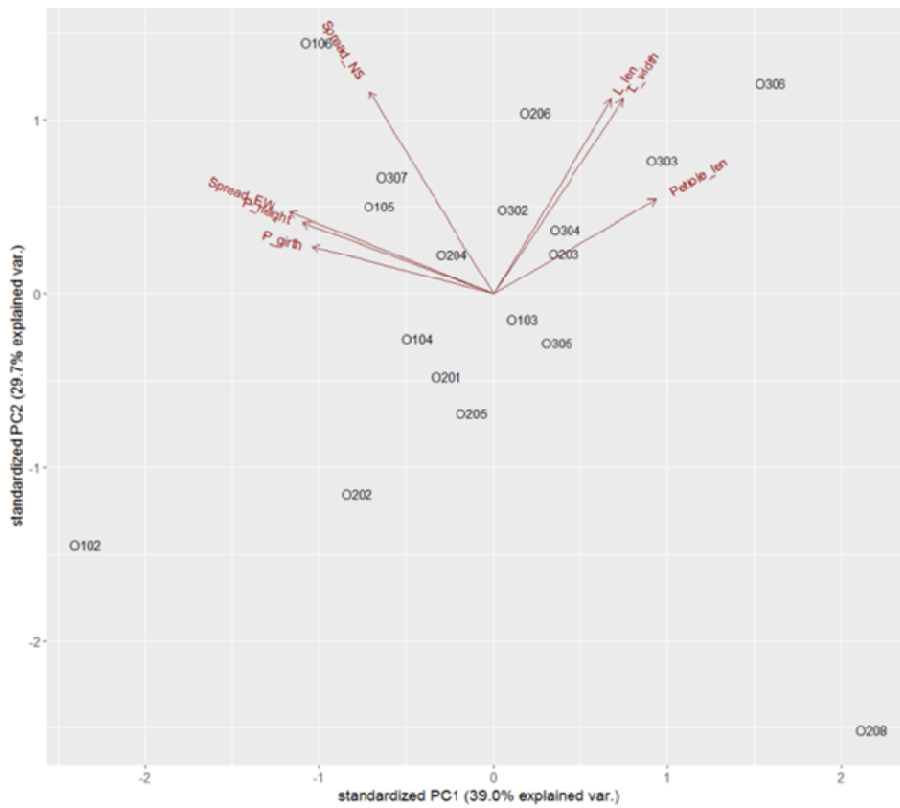


Fig. 2: Principal component analysis for morphological and leaf characters

Table 4: Fruit traits of *Flacourtia montana* collections

Accession No.	Pulp weight (g)	No.of Seed/ fruit	Seed wt. (g)/ Fruit	TSS (^o Brix)	Acidity (%)
O102	2.14	9.0	0.67	15.0	0.22
O104	2.62	11.0	0.66	15.0	0.51
O106	3.26	9.0	0.68	10.5	0.53
O201	1.50	10.0	0.74	15.0	0.25
O203	1.25	10.0	0.66	15.1	0.53
O204	1.32	10.0	0.67	15.0	0.47
O208	1.01	9.0	0.64	10.5	0.34
O303	2.13	10.0	0.70	15.1	0.43
O304	2.20	8.0	0.61	15.0	0.43
O305	0.85	8.0	0.63	15.1	0.39
O307	0.97	9.0	0.65	15.2	0.41
Average	1.75	9.36	0.67	14.23	0.41
Min	0.85	8.00	0.61	10.50	0.22
Max	3.26	11.00	0.74	15.20	0.53
SD	0.84	1.00	0.04	1.93	0.13

Characterisation for fruit traits and evaluation for yield

The fruit started maturing in the month of February and peak fruiting was in March. The number of fruits/tree ranged from 0 to 4008. There were no fruits in accessions 0103, 0105, 0202, 0205, 0206, 302 and 0306. It seems these were male plants. The accessions 0102, 0104, 0106, 0201, 0203, 0204, 0208, 0303, 0304, 0305 and 0307 produced fruits either in one year or both the year (Table 5). As it is well known that *Flacourtia montana* have unisexual flowers, Some trees produces only male flower while others produce only female flowers. (<http://www.flowersofindia.net>). Among the remaining plants highest yield (9.46 kg) was obtained in accession- 0106. Higher yield was also obtained in accession- 0201 (7.83 kg). Average fruit yield ranged from 0 to 9.46 kg per plant. Most of the accessions are mid-season maturing and except

accession 0307 which was early maturing. The fruits of all the accessions were spherical (Table 5). The productivity was low in most of the accessions. The low productivity may be associated with lack of pollination. The average fruit weight ranged from 1.51 g to 3.94 g. Highest fruit weight (3.94g) was also recorded in 0106 followed by 2.84 (0102). The fruit equatorial diameter ranged from 0.825cm to 1.036 cm while fruit polar diameter ranged from 1.014cm to 1.062 cm. The fruit colour was dark red (Red 46b). Fruit pulp was smooth and fibre content was low. There was no flavour. The average pulp weight ranged from 0.85 g to 3.26 g. Number of seeds/fruit ranged from 8 to 11. The highest numbers of seeds per fruit were found in accessions-0104 (11) while it was lowest in accessions-304,305(8). The total soluble solids ranged from 10^o Brix to 15.1^o Brix. Higher total soluble solids (>15^o Brix) were

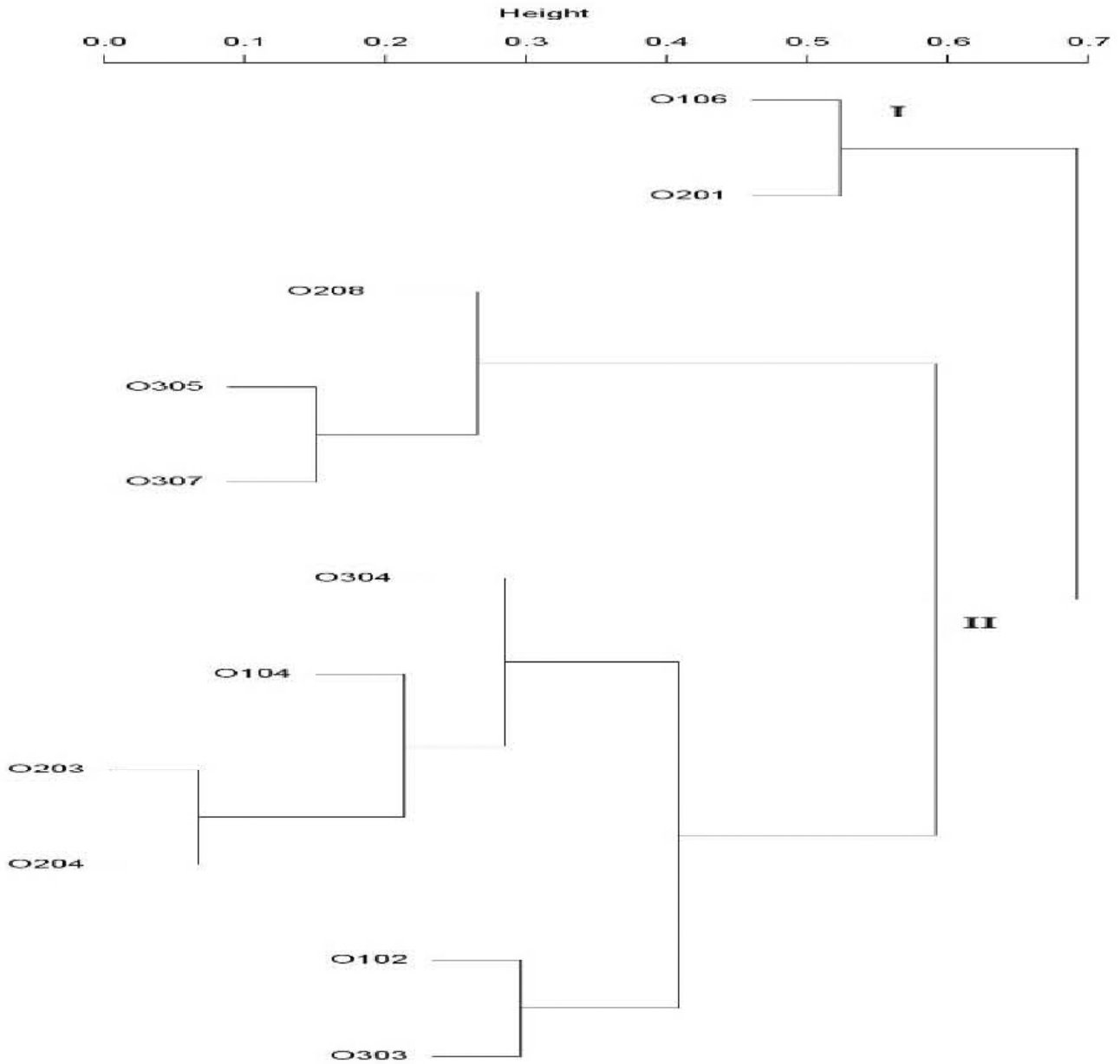


Fig. 3: Cluster analysis for fruit characters of *Flacouria montana* accessions

recorded in most of the accessions. The titrable acidity was ranged from 0.22 % to 0.53 %, it was height in accession- 0203 (Table 6).

Cluster analysis

Clustering of the 11 accessions was done based on the yield and yield contributing characteristics the dataset consisted of mixed data types viz. numeric and attribute, the distance between the accessions was computed using Gower’s distance measure. Hierarchical clustering of the accessions based on

the complete agglomeration method was done for the above distance matrix and a dendrogram was generated (Fig 3). Minimum distance was observed between O305 and O204 while maximum distance was found between O104 and O102. Principal Component Analysis

The analysis of PCA for yield showed that 64.5% of the total variation was explained by the first two principal components (40% by PC1 and 24.5% by PC2) (Fig.4).

Table 5: Fruit yield and related traits in *Flacourtia montana* accessions

Accession No.	Branch thorniness	No. of thorns up to 1 m stem height	Type of plants	Immature fruit drop	Average No. of fruits/tree	Average Yield (kg /tree)	Maturity group	Fruit shape	Productivity status
O102	Less thorny	15.0	Female	High	1942	5.51	Mid	Spherical	Low
O103	Thornless	0.0	Male	-	0	0	-	-	Nil
O104	Thornless	0.0	Female	Low	441.5	1.43	Mid	Spherical	Low
O105	Highly thorny	63.0	Male	-	0	0	-	-	Nil
O106	Less thorny	3.0	Female	High	2400	9.46	Mid	Spherical	High
O201	Thornless	0.0	Female	High	4008.5	7.83	Mid	Spherical	High
O202	Less thorny	6.0	Male	-	0	0.00	-	-	Nil
O203	Moderate thorny	21.0	Female	Low	44.5	0.17	Mid	Spherical	Low
O204	Moderate thorny	31.0	Female	Low	14	0.02	Mid	Spherical	Low
O205	Moderate thorny	45.0	Male	-	0	0	-	-	Nil
O206	Moderate thorny	32.0	Male	-	0	0	-	-	Nil
O208	Moderate thorny	47.0	Female	Low	275	0.45	Mid	Spherical	-
O302	Less thorny	18.0	Male	-	0	0	-	-	Nil
O303	Highly thorny	67.0	Female	High	1025	2.91	Mid	Spherical	Low
O304	Less thorny	6.0	Female	Low	175	0.98	Mid	Spherical	Low
O305	Moderate thorny	36.0	Female	Low	22.5	0.07	Mid	Spherical	Low
O306	Moderate thorny	33.0	Male	-	0	0.00	-	-	Nil
O307	Moderate thorny	47.0	Female	Low	69.5	0.23	Early	Spherical	Low
Average	-	26.11	-	-	578.19	1.61	-	-	-
Min	-	0.00	-	-	0.00	0.00	-	-	-
Max	-	67.00	-	-	4008.50	9.46	-	-	-
SD	-	21.79	-	-	1109.88	2.93	-	-	-

Table 6: Fruit traits of *Flacourtia montana* accessions

Accession No.	Fruit length (cm)	Fruit width (cm)	Fruit wt (g)	Fruit colour	Pulp colour	Pulp fibre content	Pulp taste	Pulp flavour
O102	1.019	1.048	2.84	Dark red	Dark red	Low	Sweet	No
O104	1.034	1.062	3.24	Dark red	Dark red	Low	Acid sweet	No
O106	1.036	1.055	3.94	Dark red	Dark red	Low	Acid sweet	No
O201	0.89	1.014	2.26	Dark red	Dark red	Low	medium sweet	No
O203	1.034	1.049	1.94	Dark red	Dark red	Low	Acid sweet	No
O204	0.942	1.055	2.0	Dark red	Dark red	Low	Acid sweet	No
O208	0.89	1.014	1.64	Dark red	Dark red	Low	Acid sweet	-
O303	1.037	1.054	2.84	Dark red	Dark red	Low	Acid sweet	No
O304	0.891	1.025	2.81	Dark red	Dark red	Low	Acid sweet	No
O305	0.936	1.025	1.51	Dark red	Dark red	Low	Acid sweet	No
O307	0.825	1.027	1.62	Dark red	Dark red	Low	Acid sweet	No
Average	0.96	1.04	2.42	-	-	-	-	-
Min	0.83	1.01	1.51	-	-	-	-	-
Max	1.04	1.06	3.94	-	-	-	-	-
SD	0.08	0.02	0.84	-	-	-	-	-

Correlation analysis between growth and yield characters

There was no significant correlation of growth characters with yield and plant height. The plant spread was positively correlated with yield and fruit

weight. The petiole length was found positively correlated with thorniness (Table 7). The characterization and evaluation of mountain sweet thorn accessions revealed that most of them are thorny and about 45 percent are male.

Table 7: Correlation analysis between growth and yield characters

	No of thorns	No. of Fruits/tree	Yield	Fruit length	Fruit width	Fruit weight
Plant height	-0.27	0.20	0.33	0.30	0.46	0.55
Plant girth	-0.17	-0.01	0.11	0.17	0.33	0.13
Plant spread (E-W)	-0.54	0.48	0.59	0.15	0.34	0.43
Plants spread (N-S)	-0.34	0.24	0.41	0.33	0.57	0.53
Leaf length	0.27	-0.21	-0.12	0.10	0.26	0.11
Leaf width	0.07	-0.13	-0.06	0.00	0.09	0.17
Petiole length	0.63	-0.57	-0.53	-0.23	-0.26	-0.38

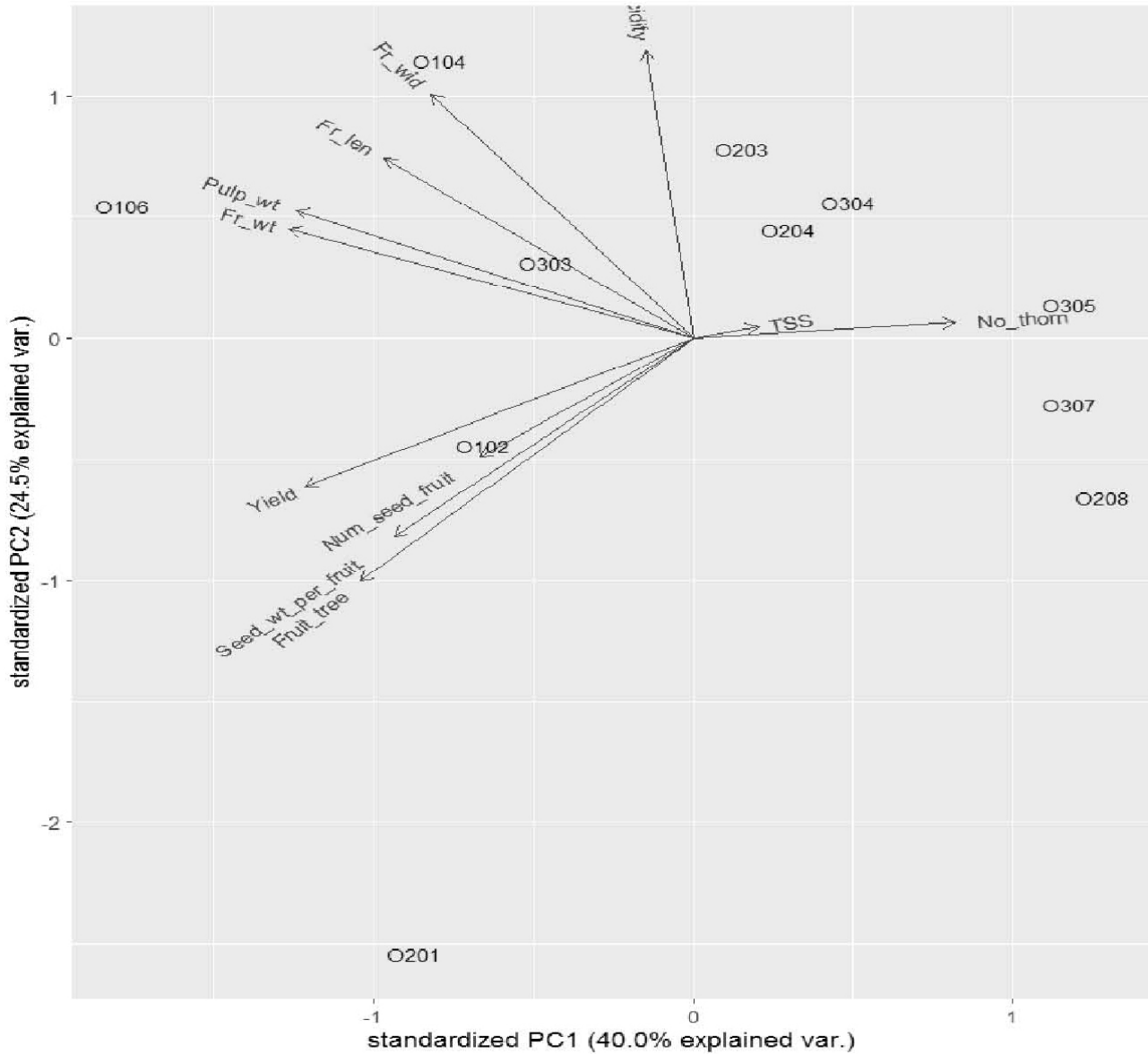


Fig. 4: Principal component analysis for fruit characters

All the accessions were dioecious as either they produce either only male flower or only female flowers. The fruits are bright and bearing habit is sparse to heavy. The fruits are dark red with weight ranging from 1 to 3 g. On the basis of the

evaluation one collection (accession- 0201) was found thornless, heavy and regular bearer and average fruits weight (2.26 g). This high yielding, thornless accession is recommended for cultivation.

REFERENCES

- Anonymous. 2009. *Flacourtia montana* - Mountain sweet thorn - Flowers of India (<http://www.flowersofindia.net>)
- Arora, R. K. 2014. Diversity in underutilized plant species - An Asia Pacific perspective. Bioversity International, New Delhi, India, p.203.
- Barwick, M. 2004. Tropical and subtropical trees - A worldwide encyclopaedic guide. Thames & Hudson, London.



- Berg, L. 2007. Introductory Botany: Plants, people, and the environment, Media Edition. Cengage Learning. ISBN 978-1-111-79426-2.
- Gupta, R. 1972. Textbook of systematic botany. Atma Ram and Sons, Delhi. p. 609.
- Joshy, C., Thahimon, P.A., Kumar, R.A., Carla, B. and Sunil, C., 2016. Hepatoprotective, anti-inflammatory and antioxidant activities of *Flacourtia montana* J. Grah leaf extract in male Wistar rats. *Bulletin of Faculty of Pharmacy, Cairo University*, 54(2): 209-217.
- Mundaragi, A., Thangadurai, D., Appaiah, K.A.A., Dandin, C.J. and Sangeetha, J., 2019. Physicochemical characterization, antioxidant potential and sensory quality of wine from wild edible fruits of *Flacourtia montana* J. Graham. *Brazilian Archives of Biology and Technology*. 62:1-12.
- Mundaragi, A. and Thangadurai, D. 2017. Process optimization, physicochemical characterization and antioxidant potential of novel wine from an underutilized fruit *Carissa spinarum* L. (Apocynaceae). *Food Science and Technology*, 38:428-433.
- R.H.S. Colour chart. 1966. Royal Horticultural Society (Great Britain); British Colour Council. London.
- Rangana, S. 1986. Handbook of analysis and quality control for fruit and vegetable products. Tata McGraw-Hill Education. p1112.
- Team RC. 2019. R: A language and environment for statistical computing. R Foundation for Statistical Computing, Vienna, Austria. URL <https://www.R-project.org>.
- Tripathi, P.C., Karunakaran, G., Sankar, V. and Senthil Kumar, R. 2015. Survey and Conservation of Indigenous Fruits of Western Ghats., *Journal of Agricultural Science and Technology* 5(7):608-615.

(Received on 29.09.2020, Revised on 13.05.2021, Accepted on 28.06.2021)